



# Eta Process Plant and Koch-Glitsch Collaboration

**Giles Coble**

Tel (direct): +44 (0)1782 602215

Mobile: +44 (0) 7977 013548

email: [giles.coble@etapp.com](mailto:giles.coble@etapp.com)

**Martin Howard**

Tel (direct): +44 (0)1782 602125

Mobile: +44 (0) 7967 113113

email: [martin.howard@etapp.com](mailto:martin.howard@etapp.com)

**KOCH-GLITSCH.**

**YOU CAN RELY ON US.**



## Who are ETA Process Plant?

- Eta Process Plant has become a global supplier of packaged mass transfer plants for onshore and offshore applications
- Eta established in 1972
- Eta Process Plant Ltd. was acquired by Koch-Glitsch in 2002
- World's leading supplier of package Deaeration plant for sea water injection with over 550 operating units

# Core Capabilities



## ■ Engineering

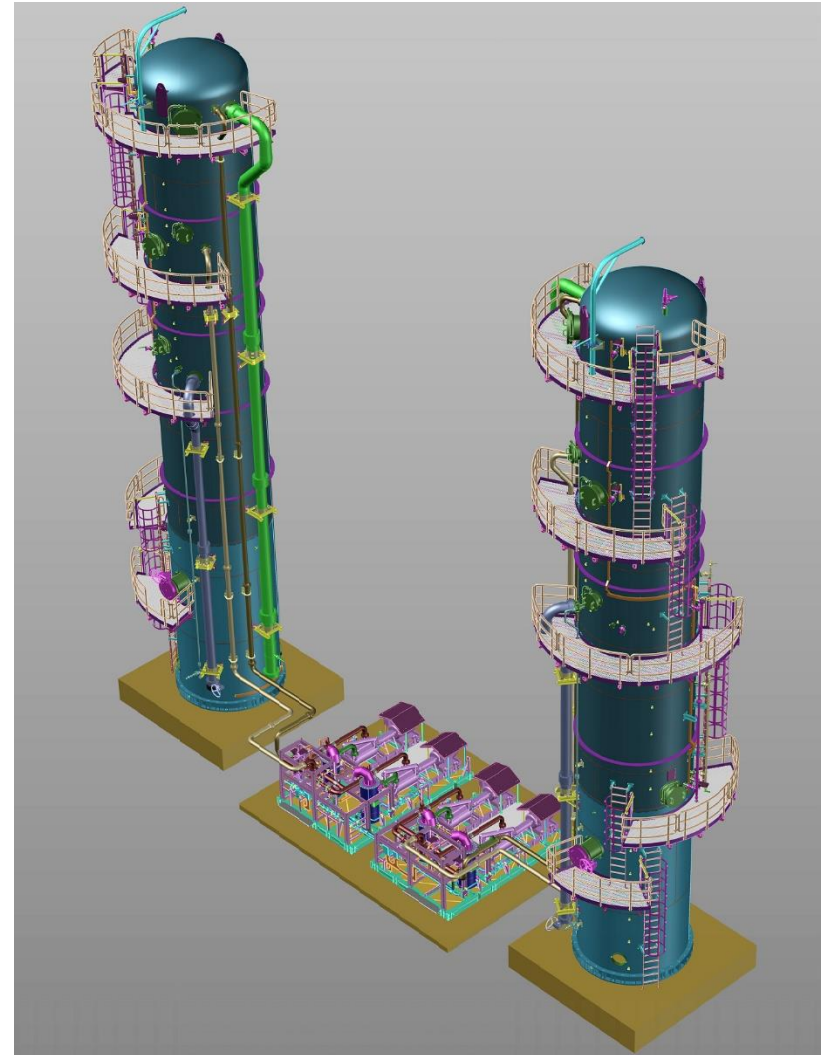
- Process Simulation and design
- Structural and Pressure Vessel design
- Piping systems
- Electrical
- Instrumentation
- Control Systems
- CAD (Models/P&ID/GA's)

## ■ Projecting

- Project management
- Procurement
- Documentation
- Site installation
- Commissioning and site support

## ■ Quality

- ISO 9001-2015

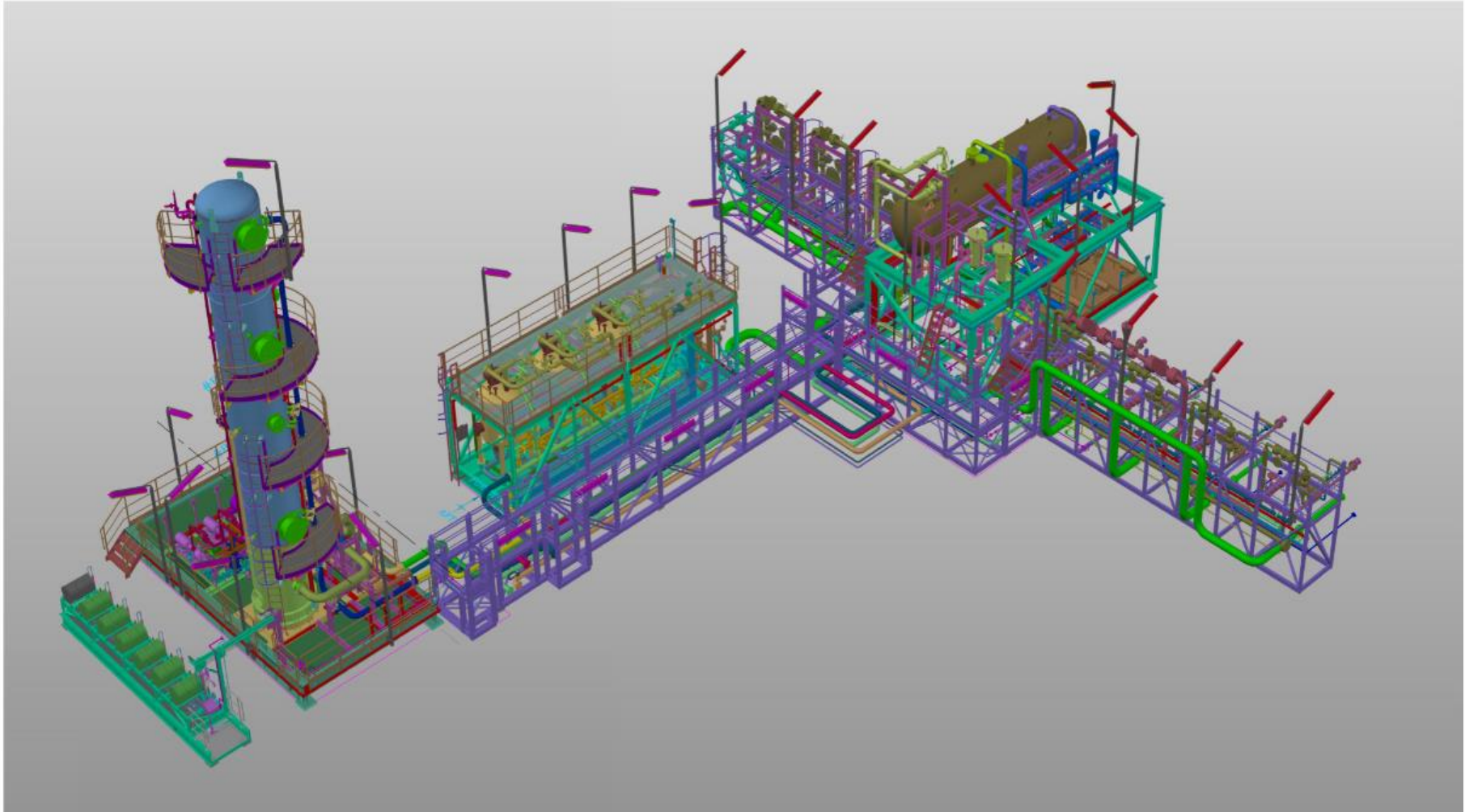


# Core Applications & Technologies

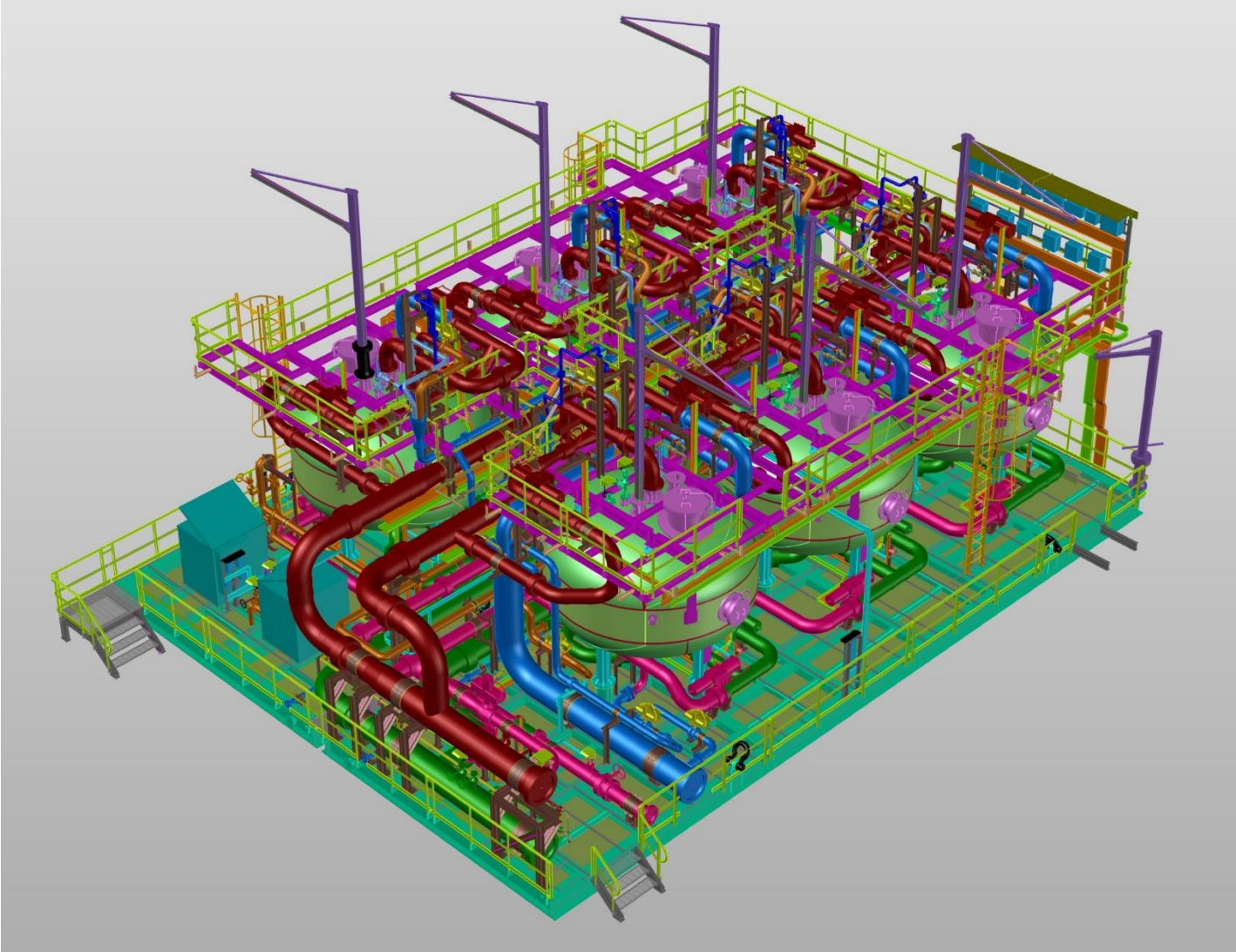


- **Oil & Gas Water Injection**
  - Vacuum Deaeration Packages
  - Gas Strip Deaeration Packages
  - Seawater Filter Packages
  - Ultrafiltration Packages
  - Chemical Injection Systems
  - Complete WI Packages; inc. Booster Pumps, UCP,s
- **Process Water Treatment**
  - Vacuum/Gas strip/Steam Deaeration
  - Sour Water; onshore/offshore
  - VOC stripping from water
- **Crude Oil Stabilization**
  - Vessels; Complete Packages
- **Absorbers & Gas Scrubbers**
  - Individual Columns
  - Complete Packages
  - Modular Systems
- **Distillation**
  - Solvent Recovery Systems
  - Product Separation Systems
- **Koch-Glitsch Partnership**
  - Carbon Capture Systems
  - Gas Sweetening Packages
  - Vacuum Separation
  - Solvent Recovery
  - Alcohol Purification

# FPSO mounted Water Injection and Power Fluids Package



# Dual Media Seawater Filtration Package



# Large North Sea Vacuum Deaerator vessel

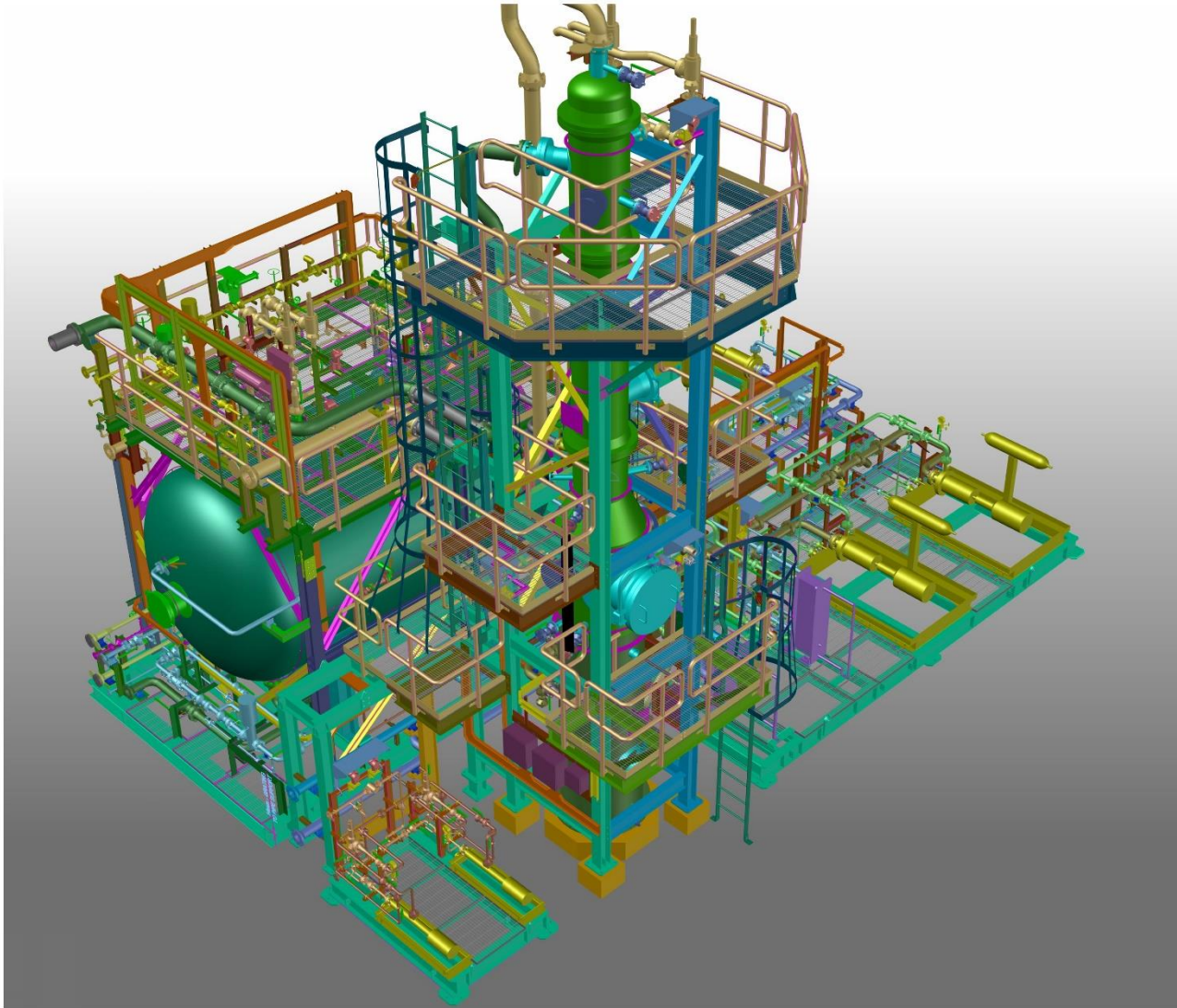


# Offshore Oil and Gas Vessels and Packages





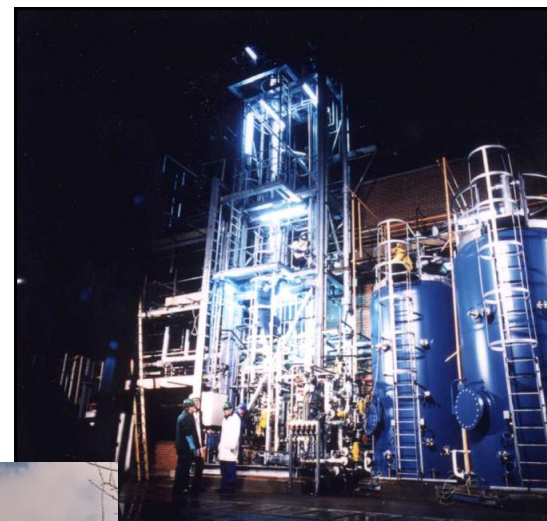
# Benzene Stripping System – prefabricated skids



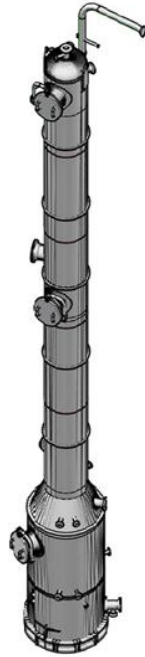
# Large Onshore Vacuum Deaerator System



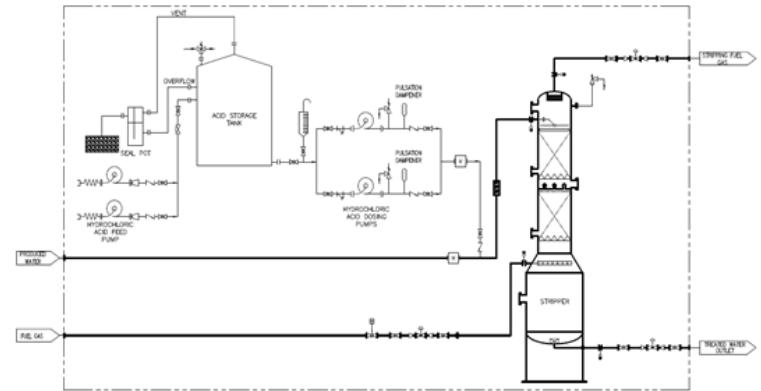
# Distillation Plant



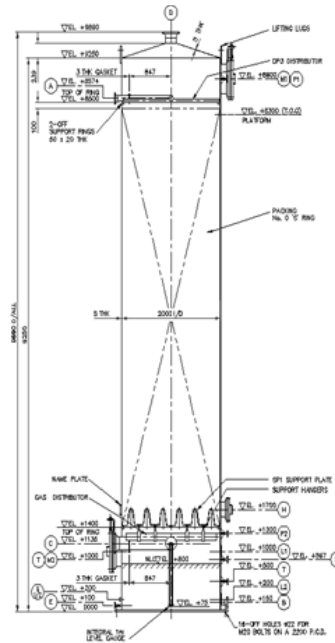
# Scrubbing and Stripping



Typical Sour Water Stripper



Typical Sour Water Stripper Flow Sheet



Typical NOx Scrubber



# Liquid Liquid Extraction Column



# Eta Process Plant – Koch-Glitsch Partnership:



The following projects were initiated as internal enquiries and delivered as complete packages in the last 2 years:

- Thailand: Ø800 Distillation Column: Carbon Steel
- UK: Ø600 Distillation Column: Stainless Steel
- Netherlands: Ø3000 Gas Cooler: Carbon Steel
- Rwanda: 4 x Ø4100 Wash Water Columns: SDSS
- Qatar: Offshore process tanks: CS & SS
- Singapore: DEMISTER® Vessel: SS



# Questions?

