



**CENTURY**  
HDPE ENVIROPANS

RAILROAD SPILL COLLECTION SYSTEMS

# CENTURY HDPE ENVIROPANS

Being a good corporate citizen is one of the highest priorities of industry today. Being environmentally correct is one of the major challenges in meeting this objective. The Century Group offers the HDPE Enviropan, an innovative state-of-the-art railroad spill collection system, which assists in meeting corporate objectives of being a good steward of the environment.

Being in the railroad construction and maintenance business for over four decades, the Century Group's experience and resources allow us to provide the most technologically advanced and cost effective solutions to the most complicated railroad spill collection challenges. With our wealth of knowledge we can assist engineers, railroads and industry in developing a spill collection plan that will meet local, state or EPA environmental regulations. The Enviropan system represents the highest environmental and safety standards in railroad spill collection.

## INNOVATIVE

### The Century HDPE Enviropan features:

- \* A patented closed drain system minimizing exposure at pan and cross drain connection.
- \* Flexible characteristics allowing for maximum seal between the pan and rail.
- \* Greater collection capacity than common containment systems.
- \* State-of-the-art ribbed design which channels the flow of materials and minimizes residues.
- \* Revolutionary self flashing pans which eliminate additional flashing and mechanical fasteners.

## DURABLE

### The Century HDPE Enviropan is:

- \* High impact resistant.
- \* Puncture and tear resistant.
- \* Greatly resistant to the broadest array of materials.
- \* Extremely resistant to ultra violet rays.
- \* Ribbed in design for rigid structure.
- \* Not adversely affected by extreme high or low temperatures.

## VERSATILE

### The Century HDPE Enviropan:

- \* Fits 90# rail and up.
- \* Can be easily removed and reinstalled for track maintenance.
- \* Is easily relocated with no damage.
- \* Is manufactured for open or closed drain systems.
- \* Can be used in curved or tangent track.
- \* Suitable for collecting liquid and dry bulk material.

## SAFE

### The Century HDPE Enviropan is:

- \* Light weight which allows for easy handling by a four man crew.
- \* Installed with no motorized equipment in sensitive areas.
- \* Ribbed designed which reduces foot contact with product residue.
- \* Walkway grating compatible.

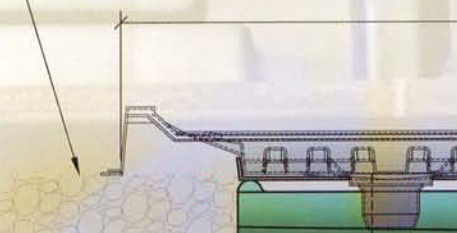
## COST EFFECTIVE

### The Century HDPE Enviropan:

- \* Can be installed with minimal track preparation.
- \* Is lightweight which minimizes labor and equipment costs.
- \* Modular lightweight construction allows for the fastest installation in the industry, virtually eliminating railroad track downtime.
- \* Protects railroad track structure after installation, thus reducing future maintenance costs.
- \* Has the most economical installation cost of any railroad spill collection system in the industry.



EXTEND BALLAST SHOULDERS BOTH SIDES OF TRACK OUT FROM RAIL A MINIMUM OF 4'-0" WITH LIMITS OF ENVIROPAN INSTALLATION



**CLASS I RAILROADS**

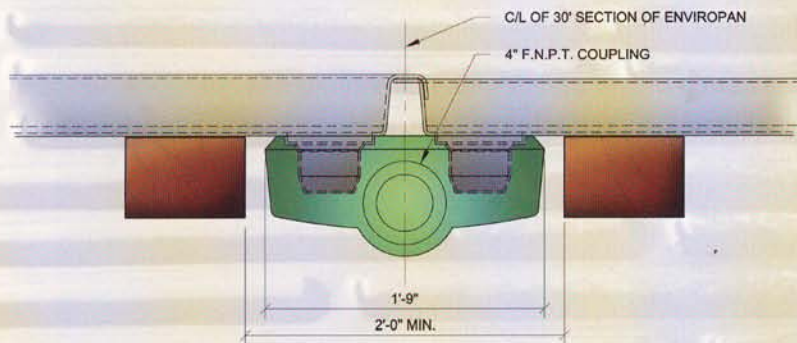
**SHORTLINE RAILROADS**

**PETROCHEMICAL INDUSTRY**

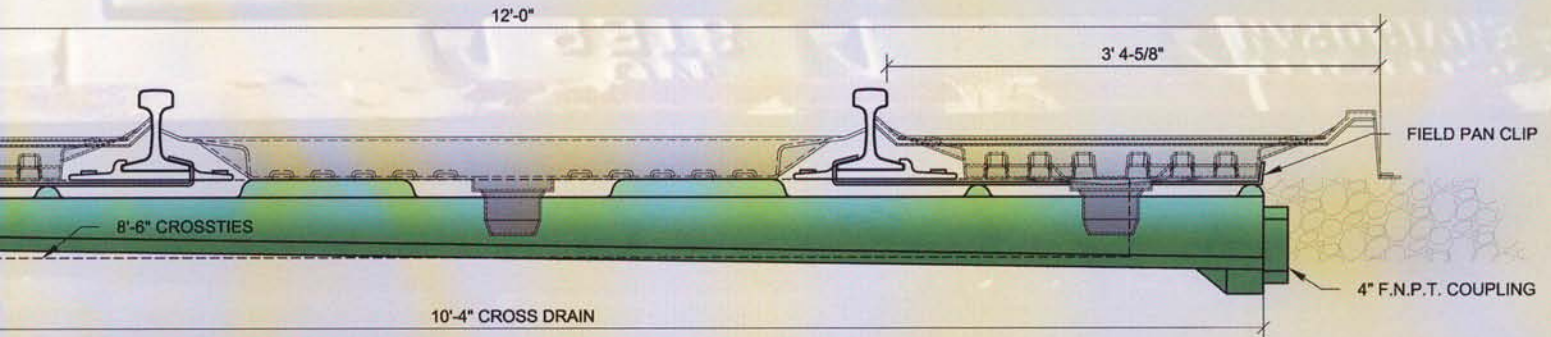
**LIGHT RAIL TRANSIT**

**MILITARY FACILITIES**

**PORTS & HARBORS**



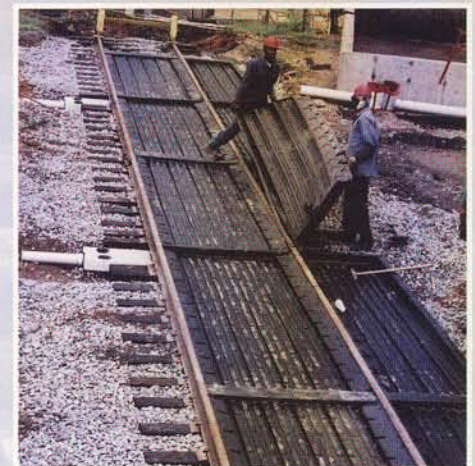
For additional information and installation instructions, visit us at [www.centurygrp.com](http://www.centurygrp.com).



*PATENTS PENDING:*  
 Patent No. 5,782,405  
 Patent No. 6,290,143

The Century HDPE Enviropans meet best management practices in regards to railroad spill collection. With Federal and State agencies regulating pollution under the Clean Water Act, the Enviropans can be a very valuable component of your company's Stormwater Pollution Prevention Plan at your:

- \* Transloading Facilities
- \* Locomotive Fueling Areas
- \* Railcar Maintenance Shops
- \* Railcar Wash Facilities
- \* Light Rail Passenger Stations
- \* Dry Bulk Cargo Facilities



# CENTURY HDPE ENVIROPANS

Let the Century HDPE Enviropans be an integral part of your environmental plan. Considered the best available technology in railroad spill collection today, the Century Enviropans can help railroads and industry:

- \* Protect their employees and the public
- \* Protect their public image
- \* Avoid expensive cleanup costs
- \* Avoid EPA or state action and penalties
- \* Avoid costly litigation
- \* Comply with CWA • SWPP guidelines

## TECHNICAL SPECIFICATIONS

Temperature Range	-100°F to +200°F
Volume Capacity	474 Gallons per 30' Section
Weight 1/4" Material Thickness	Field Pan 68 lbs. Gauge Pan 93 lbs. Cross Drain 60 lbs.
Tensile Strength at Yield	3600 psi
Elongation at Break	600%
Flexural Modulus	165,000 psi
Tensile Impact	170 ft. lbs./in <sup>2</sup>



### SPILL CONTAINMENT COMPLIANCE SAFETY AND DISCLAIMER

Because of the diverse conditions and the wide variety of materials which may be found in field conditions under which this information and our products, or the products of other manufacturers in combination with our products, may be used, seller has not made and does not make any representation, warranty, or covenant, express or implied, with respect to the merchantability, fitness, condition, quality, durability, or suitability of any item of equipment for Buyer's/Users' purposes, or any other representation, warranty, or covenant, express or implied, with respect to the product or any part thereof; Buyer/User hereby disclaiming any and all liability of Seller with respect thereto. Seller shall not be liable or responsible to Buyer/user for any damage, defect, failure to meet specifications, late delivery, failure to deliver or shortage in respect to the products, or for failure to properly install or use the products or failure due to derailments, track movement, modifications, abuse or damage arising from piping.

In addition, Seller shall not be liable or responsible to Buyer/User for any claim, loss, damage, liability, or expense of any kind or nature caused, directly or indirectly, by the products or any part thereof, or the inadequacy thereof for any purpose, or any defect or deficiency therein, or the use, operation, storage thereof, or the interruption or loss of the service or use thereof, or arising from any other reason or cause whatsoever relating to or concerning the products, or any part thereof. Seller accepts no responsibility for the results obtained by the application of this information or the safety or suitability of our products, either alone or in combination with other products.

It is the responsibility of the Buyer/User to review and test its site specific requirements and to evaluate the products to determine the safety and suitability of the products for their own specific purposes. It is the responsibility of the Buyer/User to ensure that they are in compliance with all Federal and State laws and regulations when using these products.

*Century Group, Inc. reserves the right to modify or change, without notice, any materials, specifications, equipment and/or accessories. All measurements are approximate.*

## CENTURY GROUP

P.O. Box 228  
Sulphur, LA 70664-0228  
Tel: 1-800-527-5232, Ext. 118  
Fax: 1-800-887-2153  
E-Mail: [sales@centurygrp.com](mailto:sales@centurygrp.com)  
Web Site: [www.centurygrp.com](http://www.centurygrp.com)