

HIGHLAND TANK STANDARD EQUIPMENT

1	FLANGED INLET
2	UNDERFLOW BAFFLE
3	SEDIMENT CHAMBER
4	STRIKER PLATE
5	SLUDGE BAFFLE
6	CORELLA™ PARALLEL CORRUGATED PLATE COALESCER
7	PETROSCREEN COALESCER (HTC MODEL ONLY)
8	OUTLET DOWNCOMER PIPE
9	FLANGED OUTLET
10	2" INTERFACE LEVEL SENSOR FITTING WITH EXTENSION PIPE
11	4" OIL PUMPOUT FITTING WITH INTERNAL PIPE EXTENSION PIPE
12	GAUGE PORT
13	18" FLANGED MANWAY AND COVER WITH BOLT ON EXTENSION
14	TANK INTERSTICE
15	INTERNAL LEAK DETECTION MONITOR PIPE
16	2" LEAK DETECTION SENSOR FITTING WITH EXTENSION PIPE

HIGHLAND TANK OPTIONAL EQUIPMENT

17	HIGHLAND CB SERIES SOLIDS CATCH BASIN
18	INLET VALVE
19	HIGHLAND GLM SERIES GRADE MANWAY WITH COVER
20	HOLD DOWN STRAPS
21	HIGHLAND CDA SERIES CONCRETE DEADMAN HOLD DOWN ANCHORS
22	HIGHLAND HTF/HTSF SERIES OIL INTERFACE LEVEL SENSOR
23	LEAK DETECTION SENSOR
24	ALARM CONTROL PANEL
25	MUSHROOM VENTS

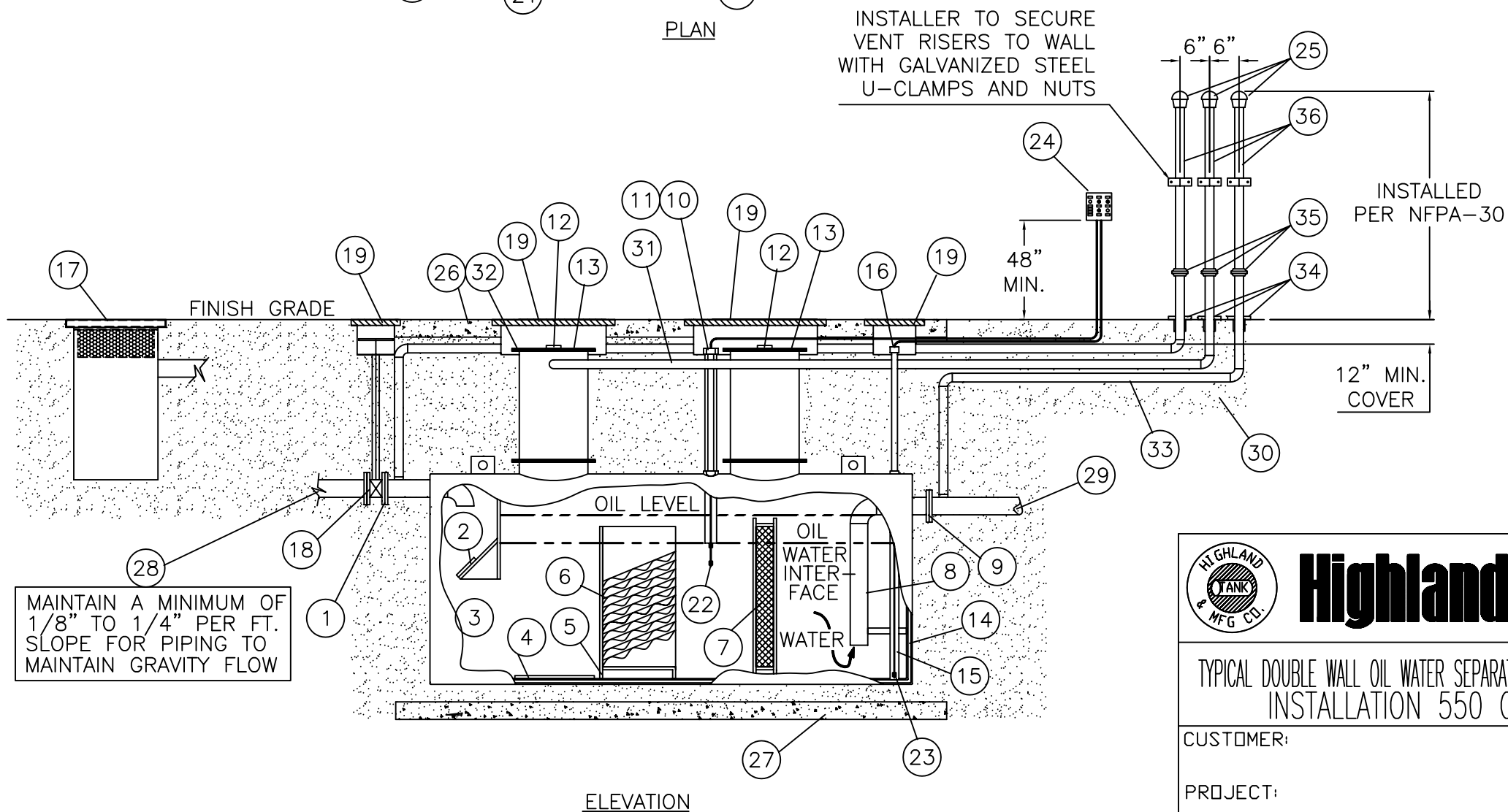
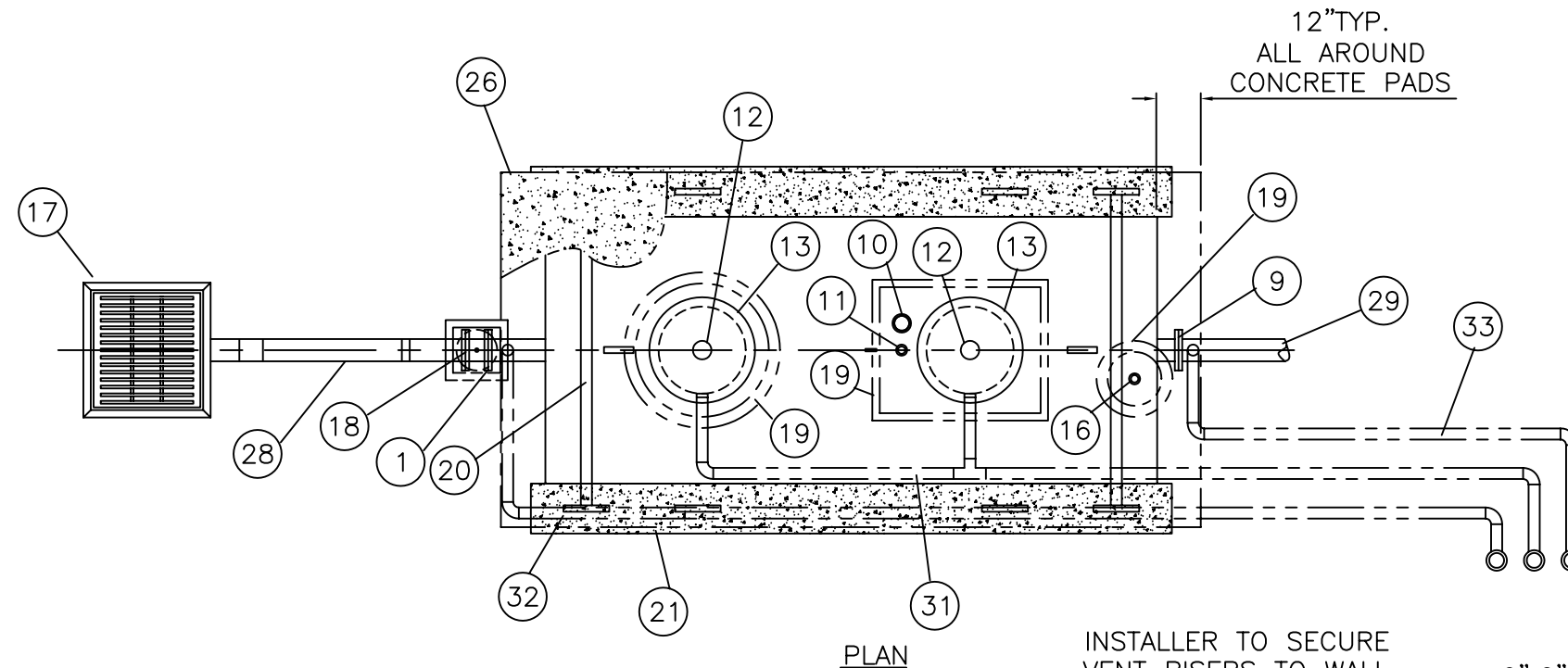
INSTALLER PROVIDED EQUIPMENT

26	CONCRETE GRADE PAD
27	CONCRETE HOLD DOWN PAD
28	INLET PIPING
29	OUTLET PIPING
30	BACKFILL AS REQUIRED
31	MANWAY VENT PIPING
32	INLET VENT PIPING
33	OUTLET VENT PIPING
34	EPOXY COATED STEEL RISER CLAMPS
35	GALVANIZED UNIONS
36	GALVANIZED STEEL VENT PIPES ABOVEGRADE

NOTES

1. UNDERGROUND COATING SYSTEM OPTIONS ARE THE HIGHGUARD, ACT-100-U, AND S.T.I.P. 3
2. MANHOLE AND PIPE EXTENSION LENGTHS VARY PER TANK SIZE AND DEPTH
3. LEAK SENSOR, LEVEL SENSOR AND OIL PUMP-OUT PIPE EXTENSIONS ARE TO EXTEND TO THE SAME ELEVATION AS THE MANWAY EXTENSION
4. ALL VENT PIPES SLOPED TO DRAIN BACK TO SEPARATOR

NOTE: ALL RIGHTS RESERVED. THIS DRAWING MUST NOT BE REPRODUCED IN ANY FORM WITHOUT THE WRITTEN PERMISSION OF HIGHLAND TANK®. HIGHLAND TANK® SHALL BE RESPONSIBLE ONLY FOR ITEMS INDICATED ON THIS FABRICATION DRAWING UNLESS OTHERWISE NOTED. CUSTOMER IS RESPONSIBLE FOR VERIFYING CORRECTNESS OF SIZE AND LOCATION OF FITTINGS, ACCESSORIES, AND COATINGS SHOWN ON THIS DRAWING.



MAINTAIN A MINIMUM OF 1/8" TO 1/4" PER FT. SLOPE FOR PIPING TO MAINTAIN GRAVITY FLOW



TYPICAL DOUBLE WALL OIL WATER SEPARATOR INSTALLATION
INSTALLATION 550 GALLON

CUSTOMER:			
PROJECT:			
QUOTE NO:	CHK'D BY:		
SCALE: NTS	DATE:	DWG. BY:	DWG. NO: 5500WSDWUGINST